

1 Application and function

This heat meter or heat / cooling meter is designed for the measurement of the consumed thermal energy in a closed heating system or heating / cooling system.



2 Contents of the package

- Heat meter, consisting of a detachable calculator, a flow sensor and two temperature sensors, connected permanently.
- Installation kit
- Installation and Operating Instructions

3 General Information

- National regulations for the consumption measurement of heat and cooling must be observed.
- The technical regulations for electrical installations must be observed.
- This product fulfils the requirements of the European Council Directive on Electromagnetic Compatibility (EMC Directive) 2004/108/EC.
- The identification plate of the instrument and the seals must not be removed or damaged – otherwise the guarantee and the approved application of the instrument are no longer valid!
- To achieve measurement stability of the meter is it necessary that the water quality meet the requirements of the AGFW-recommendation FW-510 and the document VDI (Association of German Engineers) VDI 2035.
- The heat meter left the factory in conformance with all applicable safety regulations. All maintenance and repair work is to be carried out only by qualified and authorized technical personnel.
- The instrument must be stored and transported at temperatures above-freezing.
- **Instruments with activated radio function are not allowed on air freight.**
- The correct installation point in the system must be chosen: forward or return flow, as stated on the type identification label.
- The temperature sensor cables and the cable between the calculator and flow sensor must not be kinked, rolled up, lengthened or shortened.
- To clean the heat meter (only if necessary) use a slightly moist cloth.
- To protect against damage and dirt the heat meter should only be removed from the packaging directly before installation.
- If more than one heat meter is installed in one unit, care must be taken to ensure that all the meters have the same installation conditions.
- All specifications and instructions listed on the data sheet and in the Application Notes must be adhered to.
- Further information can be obtained at www.aquametro.com.
- Instruments which have been replaced or exchanged must be disposed of according to relevant environmental regulations.
- The display is deactivated and can be activated for one minute by pushing the button (except calculator without additional interfaces).

3.1 Definition of pictograms on type identification label

	Installation in return flow
	Installation in forward flow

4 Mounting the Flow Sensor

- Flush the pipes according to the generally acknowledged rules of technology. Then close all the shut-off valves. Open the nearest draining valve for pressure release.
- Drain the closed-off pipe section.
- Loosen the coupling rings and remove the old heat meter.
- Remove all old gaskets.
- Clean the sealing surfaces.
- Insert new gaskets.
- Position the flow sensor correctly, taking into account the direction of flow (arrow on the side of the flow sensor)!
- Tighten the coupling rings.
- Detach the calculator and mount it, or rotate it to the best position for read-out.

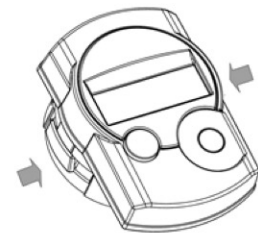
Note:

In order to simplify mounting in narrow installation spaces the calculator from the *SensoStar[®] 2+* can be detached from the flow sensor.

To release the calculator pull it carefully up off the flow sensor.

For heat meter versions it is recommended to detach the calculator.

For heat/cooling meters the calculator must be detached from the flow sensor.



5 Mounting the Temperature Sensors

For pipes of sizes < DN25 in new installations (whether new construction or refurbishment) it is required to install the temperature sensors directly immersed in the flow (without temperature pockets).

Note:

During installation of the meter make sure that the temperature sensors are mounted according to their marking.

5.1 Direct mounting (ball valve and T-piece)

- Remove the blind plug/old temperature sensor and gasket/old O-ring. Clean connection surfaces.
- Slide the O-ring off the temperature sensor and insert it to the bottom of the threaded opening of the ball valve or the T-piece.
- Insert the temperature sensor to at least 15mm, preferably the middle of the ball valve or T-piece (or a little further) and screw tightly. It is important to pay attention that the tip of the temperature sensor does not touch the bottom (the other side) of the ball valve or T-piece.

6 Start of Operation

- Slowly open the shut-off valves.
- Check that there are no leaks.

Check the following points:

- Are all shut-off valves open?
- Is the meter of the right size?
- Is the heating (heating/cooling) system clear (dirt filters not clogged)?
- Is the temperature sensor installed in the flow sensor correctly sealed to the flow sensor?
- Does the directional arrow on the flow sensor match the actual direction of flow?
- Is a flow volume displayed?
- Is a plausible temperature difference displayed?

When the meter is functioning properly, attach the seals to the temperature sensors and the flow sensor (required to protect against manipulation).

7 Display

The calculator has a liquid crystal display with 8 digits and special characters. The values that can be shown are divided into three display loops. All data is retrieved using the push button next to the display.

At the start you are automatically in the main loop (1st level). By pressing the push-button longer than 4 seconds you change to the next display loop. Keep the push-button pressed until you reach the desired information loop.

By pressing the push-button briefly you can scan all the information within a loop.

After 1 minute of non-use of the push-button, the display automatically returns to the main loop.

Level 1 / Main loop:

<div data-bbox="97 600 376 680">3213 M Wh</div> <div data-bbox="97 689 376 770">0895 M Wh</div> <p>1) Standard display: total heat energy; alternating display: cooling energy (for heating/cooling meter)</p>	<div data-bbox="448 600 727 680">88888888 GJ m³ / M kWh</div> <div data-bbox="448 689 727 792">2) Segment test, all segments triggered simultaneously</div>	<div data-bbox="799 600 1078 680">2999 M Wh</div> <div data-bbox="799 689 1078 770">3112.11</div> <p>3) Heat energy at last reading date alternating with last reading date¹⁾</p>	<div data-bbox="1150 600 1430 680">14.7 m³</div> <p>4) Total flow volume [m³]</p>
<div data-bbox="97 967 376 1048">3.456 kW</div> <p>5) Current power [kW]</p>	<div data-bbox="448 967 727 1048">0.468 m³/h</div> <p>6) Current flow [m³/h]</p>	<div data-bbox="799 967 1078 1048">1706.12</div> <p>7) Current date</p>	<div data-bbox="1150 967 1430 1048">E000 1000</div> <div data-bbox="1150 1057 1430 1137">08</div> <p>8) Information message (alternating binary and hexadecimal display)</p>
<div data-bbox="97 1265 376 1346">' 0683 M Wh</div> <div data-bbox="97 1355 376 1435">' 61 1</div> <div data-bbox="97 1444 376 1525">' 18h00</div> <div data-bbox="97 1534 376 1615">' 06h00</div> <p>9) Tariff register 1: Values alternating with tariff register no. and criteria²⁾</p>	<div data-bbox="448 1265 727 1346">" 0360 M Wh</div> <div data-bbox="448 1355 727 1435">" 62 6</div> <div data-bbox="448 1444 727 1525">" 65.00 °C</div> <p>10) Tariff register 2: Values alternating with tariff register no. and criteria²⁾</p>	<div data-bbox="799 1265 1078 1346">' 6509 m³</div> <div data-bbox="799 1355 1078 1435">' P 1 1</div> <p>11) Momentary reading of the pulse counter1 alternating with the pulse value²⁾</p>	<div data-bbox="1150 1265 1430 1346">" 58.9 M Wh</div> <div data-bbox="1150 1355 1430 1435">" P 25 kWh</div> <p>12) Momentary reading of the pulse counter 2 alternating with the pulse value²⁾</p>

Level 2 / Technician's loop:

<div data-bbox="97 1910 376 1991">2 6869 kW</div> <p>1) Max. power [kW]</p>	<div data-bbox="448 1910 727 1991">2 1853 m³/h</div> <p>2) Maximum flow [m³/h]</p>	<div data-bbox="799 1910 1078 1991">2 6220 °C</div> <p>3) Forward flow temperature [°C]</p>	<div data-bbox="1150 1910 1430 1991">2 4180 °C</div> <p>4) Return flow temperature [°C]</p>
---	--	---	---

<div style="border: 1px solid black; padding: 2px; text-align: center;"> 20.40 2 ↓↓ </div> 5) Temperature difference [K]	<div style="border: 1px solid black; padding: 2px; text-align: center;"> d 480 2 </div> 6) Days in operation since calibration	<div style="border: 1px solid black; padding: 2px; text-align: center;"> PPL 78625 2 </div> 7) Pulse value [pulses per litre]	<div style="border: 1px solid black; padding: 2px; text-align: center;"> bus 0 2 </div> 8) M-Bus address
<div style="border: 1px solid black; padding: 2px; text-align: center;"> 12345678 2 </div> 9) Serial number	<div style="border: 1px solid black; padding: 2px; text-align: center;"> 102 100 2 </div> 10) Firmware version		

Level 3 / Statistics Loop:

<div style="border: 1px solid black; padding: 2px; text-align: center;"> 3 2.785 MWh </div> 1.) Previous reading date alternating with its value. Alternatively, the total volume or tariff values can be displayed. ¹⁾	<div style="border: 1px solid black; padding: 2px; text-align: center;"> 3 1.12.10 </div>	<div style="border: 1px solid black; padding: 2px; text-align: center;"> 3 2.638 MWh </div> 2.-16.) Monthly values: Dates alternating with their values. Alternatively, the total volume or tariff values can be displayed. ¹⁾	<div style="border: 1px solid black; padding: 2px; text-align: center;"> 3 1.10.11 </div>
---	--	--	--

¹⁾ Up to the end of the month the consumption and reading date for that month will be shown as 0.

²⁾ Can be set using the software "Device Monitor". A dedicated meter password is necessary. The password is available from the manufacturer.

8 Technical Data

Approval Data (the data on the type label are valid)			
Nominal flow qp	m ³ /h	0,6	1,5
Accuracy class (EN1434-1:2007)		class 3	class 2/3
Minimum flow qi/qp	vertical	1:25	1:25 / 1:50
	horizontal	1:50	1:25 / 1:50 / 1:100
Maximum flow qs/qp		2:1	2:1
Mechanical class		M1	M1
Electromagnetical class		E1	E1
Protection class of flow sensor		IP54	IP54
Flow disturbance class		U0	U0
Flow Sensor			
Nominal diameter DN	mm	15	20
Maximum flow qs	m ³ /h	1,2	5,0
Pressure drop Δp at qp	mbar	160	196
Nominal pressure PN	bar	16	
Maximum pressure MAP	bar	25	
Low flow threshold	l/h	4	10
Installation length	mm	110	130
Connection thread	Zoll	G3/4B	G1B
Temperature range	°C	15 - 90	
Mounting position		horizontal; vertical	
Point of installation		return flow (standard version) forward flow (optional version)	
Calculator			
Ambient temperature	°C	5 - 55; see 'Influencing_factors_battery_lifetime' at www.engelmann.de	
Temperature range	°C	1 - 150 (1 - 105; option wireless M-Bus / wireless M-Bus 2IE)	
Temperature difference	K	3 - 100	
Protection class		IP54	
Power supply		3V lithium battery	

Battery lifetime, estimated	years	10 (limited quantity of radio telegrams; no option: pulse output); 6 + 1; see 'Influencing_factors_battery_lifetime' at www.engelmann.de
Data storage		E ² PROM; daily
Display		8 digits + special characters
Interfaces	standard	Infrared
	optional	M-Bus galvanically isolated; M-Bus galvanically isolated + 2 pulse inputs; wireless M-Bus; wireless M-Bus + 2 pulse inputs; pulse output
Temperature Sensors		
Sensor type	Platinum precision resistor PT500	
Connection type	2-wire system	
Diameter	mm	5,0 (optional 5,2 oder 6)
Length of cables	m	1,5 (optional 3)

9 Interfaces and Options

9.1 Optical (infrared) interface

For the communication with the optical interface an optocoupler and the 'Device Monitor' is necessary. The optocoupler and the 'Device Monitor' software are available as accessory equipment.

Baud rate: 2400 baud

The optical (infrared) interface is activated by pressing the push-button.

If within 60 seconds neither a valid telegram is received nor the push-button pressed again, the interface is deactivated. The number of read-outs via the optical interface is limited to 300 times per day.

9.2 M-Bus (optional)

The M-Bus is a galvanically isolated interface for the transmission of meter data (absolute values).

9.3 General information about the M-Bus interface

It is important to note that the acknowledged state of the art technology rules and the relevant legal restraints (international and local; see "Relevant Norms / Standards / Literature") are to be observed.

The installation has to be performed by authorized, skilled persons.

If the regulations and the information in the installation and operating instruction manuals are not strictly followed, or if the installation is shown to be faulty, any resulting expenses will be charged to the company responsible for the installation.

Recommended type of cable: Telephone cable J-Y(ST)Y 2x2x0.8mm².

It is important to make sure that the topology of the M-Bus network (cable lengths and cross-sections) is suitable for the **baud rate (2400 Bd)** of the end instruments.

Further information can be found in the detailed 'Application Note M-Bus' at www.engelmann.de.

9.3.1 Relevant norms / standards / literature M-Bus

IEC 60364-4-41 (2005-12)	Low-voltage electrical installations - Part 4-41: Protection for safety - Protection against electric shock
IEC 60364-4-44 (2007-08)	Low-voltage electrical installations - Part 4-44: Protection for safety - Protection against voltage disturbances and electromagnetic disturbances
IEC 60364-5-51 (2005-04)	Electrical installations of buildings - Part 5-51: Selection and erection of electrical equipment - Common rules
IEC 60364-5-54 (2011-03)	Low-voltage electrical installations - Part 5-54: Selection and erection of electrical equipment - Earthing arrangements and protective conductors
EN 50310 (2010)	Application of equipotential bonding and earthing in buildings with information technology equipment
EN 13757-1_2002, -2_2004, -3_2004	Communication systems for meters and remote reading of meters

The M-Bus	A Documentation, Version 4.8, M-Bus User group
TI Technical Journal	Texas Instruments Technical Journal Vol. 8, 1991 M-Bus

9.3.2 Additional technical specifications

The installation has to fulfill the requirements of the relevant norms / standards / literature (see paragraph 3.2) and the specifications as follows:

Maximum voltage M-Bus	42 V
Minimum voltage M-Bus	21 V
Maximum ripple voltage	200 mV; EN13757-2_2004; 4.3.3.6
Maximum voltage potential differences	2V

9.3.3 Technical data M-Bus

Primary address	0 (factory setting); 1 – 250 (configurable)
Baud rate	2400; 300 (configurable)
Connecting cable length	1 m

9.3.4 The number of possible read-outs (2400Bd) depends on the number of devices in the M-Bus network

Number of devices in the network	Read-outs per day primary address	Read-outs per day secondary address (without using SND NKE)
3	655	275
20	485	170
60	300	90
120	190	52
250	105	27

Values for standard baud rate 2400 Bd.

If fewer read-outs are carried out, the unused 'credit' is stored in the instrument and can be used later.

During M-Bus communication with an end instrument the other interfaces (push-button, optical interface) of this instrument cannot be used.

9.4 Radio interface wireless M-Bus EN13757-3, -4 (optional)

The radio interface is for the transmission of meter data (absolute values).

General information about the radio interface:

Installation of radio components between or behind heating pipes, or the presence of other bulky obstacles directly over or in front of the housing must be avoided.

The transmission quality (range, telegram processing) of radio components can be negatively influenced by instruments or equipment with electromagnetic emissions, such as telephones (particularly LTE mobile radio standard), wi-fi routers, baby monitors, remote control units, electric motors, etc.

In addition, the construction of the building has a strong influence on the transmission range and coverage.

Furthermore, when using installation boxes (substations) they must be equipped with non-metallic covers or doors.

The factory-setting of the clock in the meter is standard (winter) Central European Time (GMT +1). There is no automatic changeover to daylight savings (summer) time.

The radio function is deactivated upon delivery (factory-setting). See section 'Activation of the radio interface'.

9.4.1 Technical data radio

Frequency	868 MHz
Transmission power	up to 12 dBm
Protocol	wireless M-Bus based on EN 13757-3
Selectable modes	S1 / T1 / C1
Telegrams	- short telegram in conformity to AMR (OMS-Spec_Vol2_Primary_v301): energy (heat/cooling energy, pulse input 1, pulse input 2), total volume, flow, power, information message, return flow temperature, temperature difference

	- long telegram for walk-by read-out: energy (heat/cooling energy, pulse input 1, pulse input 2), total volume, information message, 15 monthly values
Encryption	AES: Advanced Encryption Standard; key length: 128 bits

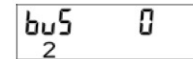
9.4.2 Radio configuration

Parameter	Possible settings	Factory setting (Battery lifetime, estimated: 6 + 1 years)
Mode	S1 / T1 / C1; unidirectional	T1 (unidirectional)
Transmission period	00:00 - 24:00; any time period in the day	7:00 am - 7:00 pm
Transmission interval	120 seconds - 240 minutes	120 seconds (heat meters)
Weekdays	Monday – Sunday (any weekday)	Monday - Friday
Weeks in a month	1 – 4 (4: uninterrupted, incl. a possible 5 th week)	1 – 4 (4: uninterrupted)
Months	1 - 12	1 - 12
Radio activation date	01.01 - 31.12. (day. month)	not set
AES-128- Encryption	- not encrypted; - encrypted: - Master Key; - random key per instrument	Master Key
Type of telegram	- short telegram in conformity to AMR (OMS-Spec_Vol2_Primary_v301) - long telegram for walk-by read-out	long telegram (walk-by)

9.4.3 Activation of the radio interface

The radio interface **leaves the factory deactivated**. It can be activated as follows:

a) Without using additional software the radio function can be activated by pressing the push-button for more than 3 seconds while at the display item 'M-Bus address', second level, item 8 (see section 8. Display, Level 2 / Technician's Loop) is displayed. The standard factory-settings will be activated.

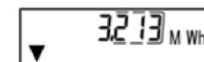


b) The radio function can also be activated using the software 'Device Monitor'.

This software can be ordered separately as an option.

The exact procedure for activating the radio function using this software is described in the accompanying handbook.

After successful activation of the radio function a triangle will appear permanently in the lower left corner of the display.



If using the compact mode, for one hour after activation the meter transmits in installation mode. This means that format telegrams and compact telegrams are sent alternately.

During installation mode at least one meter of the version being installed (forward or return flow, heat or heat/cooling, pulse inputs, display units) must be read out with the Engelmann Read-out Software. The format of the telegram will be stored locally in the PC in an .xml file.

After completion of the installation mode only compact telegrams will be transmitted.

9.5 Two additional pulse inputs (optional; only in conjunction with M-Bus or radio)

With this option, additional instruments with pulse outputs can be read out via M-Bus or radio.

General information about pulse inputs:

It is important to note that the acknowledged state of the art technology rules and the relevant legal restraints (international and local; see "Relevant Norms / Standards / Literature") are to be observed.

The installation has to be performed by authorized, skilled persons.

If the regulations and the information in the installation and operating instruction manuals are not strictly followed, or if the installation is shown to be faulty, any resulting expenses will be charged to the company responsible for the installation.

9.5.1 Relevant norms / standards / literature pulse inputs

IEC 60364-4-41 (2005-12)	Low-voltage electrical installations - Part 4-41: Protection for safety - Protection against electric shock
IEC 60364-4-44 (2007-08)	Low-voltage electrical installations - Part 4-44: Protection for safety - Protection against voltage disturbances and electromagnetic disturbances
IEC 60364-5-51 (2005-04)	Electrical installations of buildings - Part 5-51: Selection and erection of electrical equipment - Common rules
IEC 60364-5-54 (2011-03)	Low-voltage electrical installations - Part 5-54: Selection and erection of electrical equipment - Earthing arrangements and protective conductors
EN 50310 (2010)	Application of equipotential bonding and earthing in buildings with information technology equipment
EN1434-2 2007	Heat Meters — Part 2: Constructional requirements

9.5.2 Technical data pulse inputs

Pulse input class	CMOS; IB according to EN1434-2:2007
Internal pull-up voltage	+ 3V DC
Internal pull-up resistance	2 M Ω
Current	= 1,5 μ A
High-level threshold	U \geq 2 V
Low-level threshold	U \leq 0,5 V
Length of connecting cable	1 m

9.5.3 Electrical requirements on the pulse output of the instrument to be connected (e.g. flow meter)

Pulse output class	(passive) output OA (reed contact / electronic switch) or OC (open collector) according to EN1434-2:2007
Pulse length "on"	\geq 100 ms
Pulse length "off"	\geq 100 ms
Current	= 1,5 μ A
Resistance "contact open"	\geq 6 M Ω
Resistance "contact closed"	\leq 3 k Ω

9.5.4 Setting up the two additional pulse inputs

The optional pulse inputs 1 + 2 for external meters can be set up using the 'Device Monitor' configuration software. The input pulse value, the units and the starting values of the external meters can be configured.

9.5.5 Set-up possibilities

Pulse value	Units
1	liters / kWh / pulse without unit
2,5	liters / kWh / pulse without unit
10	liters / kWh / pulse without unit
25	liters / kWh / pulse without unit
100	liters / kWh / pulse without unit
250	liters / kWh / pulse without unit
1000	liters / kWh / pulse without unit

Installation notes for pulse inputs:

It is important that the pulse cables not be affected by (or exposed to) the M-Bus voltage!

Check the polarity of pulse generators with 'open collector' outputs.

The cable wires must not touch each other during installation, otherwise pulses will be counted in the instrument.

When setting up the meter it may be necessary to adjust the meter reading of the instruments connected and the pulse value using the Device Monitor software.

9.5.6 Pin assignments 6-wire cable (only in conjunction with M-Bus)

Pin	Color	Connection
1	White	IE1+
2	Brown	IE1 \perp
3	Green	IE2 \perp
4	Yellow	IE2+
5	Grey	M-Bus
6	Pink	M-Bus

9.5.7 Pin assignments 4-wire cable (only in conjunction with radio)

Pin	Color	Connection
1	Yellow	IE1+
2	Green	IE1 \perp
3	Brown	IE2 \perp
4	White	IE2+

9.6 Potential-free pulse output (optional)


The potential-free pulse output is an electronic switch that outputs counting pulses of the meter which can be used for any purpose.

The pulse output closes, corresponding to the pulse value shown on the type identification label on the instrument.

9.6.1 Technical data pulse output

Pulse output class	OA (electronic switch) according to EN1434-2:2007
Pulse value heat energy	1kWh/pulse
Pulse value volume (optional)	100 l/pulse
Peak switching current	300 mA ~/-
Switching voltage, maximum	35 V ~/-
Switching power, maximum	300 mW
Contact isolation	> 10 ⁹ Ohm
Contact resistance (on)	max. 25 Ohm
Contact capacity	1,5 pF
Maximum current	120 mA
Withstand voltage (open contact)	350 V ~/-
Closure time	125 ms
Interval between pulses	125 ms

10 Information Messages



When the instrument has detected an information message, the message symbol is displayed: 


The specific message can be found at the menu item 8 'Information message' in level 1 / Main loop (see section 8, Display). The instrument recognizes seven message causes, which can also occur in combination with each other. The messages are shown on the display.

The message code is displayed alternately in binary and hexadecimal form.

Binary display	Description	Hexadecimal display
1 at first place	Check sum error	E 40
1 at second place	E2PROM defective	E 20
1 at third place	Instrument has been resetted	E 10
1 at fourth place	Scanning coil defective	E 08
1 at fifth place	Reference sensor defective	E 04
1 at sixth place	Return flow sensor defective	E 02 / E 82
1 at seventh place	Forward flow sensor defective	E 01 / E81

Example: scanning coil fault

Error	Check sum fault	E ² PROM fault	Reset	Scanning coil fault	Reference sensor fault	Return flowsensor fault	Forward flowsensor fault	
Error code	6	5	4	3	2	1	0	Alternating hexadecimal message displayed (LCD)
Display location	1	2	3	4	5	6	7	
Alternating binary message displayed (LCD)								

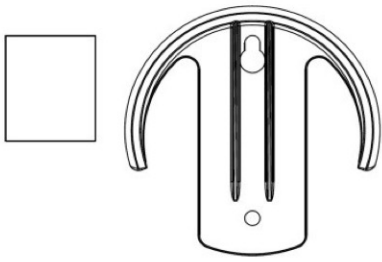
When a message  appears in the standard display (total heat, or alternating total heat and cooling energy), with the exception of the messages 'reset' (10), the instrument must be exchanged and sent to the supplier for examination.

10.1 Message description / Error description

Message / Error	Effect	Possible cause
Forward flowsensor Fault	No calculations are carried out. The registers for flow and energy are not being updated (no new data is being stored).	Sensor cable severed; sensor cable shorted.
Return flowsensor fault	No calculations are carried out. The registers for flow and energy are not being updated (no new data is being stored).	Sensor cable severed; sensor cable shorted.
Reference-sensor fault	No calculations are carried out. The registers for flow and energy are not being updated (no new data is being stored).	A defect on the calculator circuit board.
Coil fault (the scanning is not functioning properly)	No calculations are carried out. The registers for flow and energy are not being updated (no new data is being stored).	Coil shorted; connecting cable between calculator housing and flow sensor damaged.
Reset	The measurements since the last storage of data in the E ² PROM are lost (max. one day)	EMC
E ² PROM fault	After a reset, the instrument is without function.	Defective component.
Check sum fault	No calculations are carried out. The registers of flow and energy are not being updated.	Defective component.

11 Mounting with Wall Support

For mounting the calculator on the wall, a sticker pad and a wall mounting support are available. They must be ordered separately. The adhesive surfaces must be clean and free of grease.



12 Contact

Aquametro AG
Ringstrasse 75
CH-4106 Therwil
Tel. +41 61 725 11 22
Fax +41 61 725 15 95
info@aquametro.com
www.aquametro.com

